

Gardens of  
Delight



A woman with long brown hair, wearing a pink dress, stands in a field of white flowers. She is looking up with her eyes closed and her arms are outstretched to the sides, touching the flowers. The background is a lush green forest.

# Live in grace...

A wholesome existence is what awaits you at Casadel Gardens of Delight, where the gifts of nature meet the unmatched convenience and connectivity of urban lifestyle.



A low-angle shot looking up into a dense forest. Sunlight beams through the thick canopy of green leaves, creating a hazy, ethereal atmosphere. The branches of trees are visible, some in sharp focus and others blurred in the background.

# In nature's embrace...

Casadel believes in living in harmony with nature. Our green initiative ensures that you are surrounded by lots and lots of lushly rich greenery bound to keep you close to nature.



# Live city...

While we all crave to be close to nature, there are also times when the city calls out to us. And in close proximity to Kochi's vibrant cosmopolitan culture, Gardens of Delight makes sure you have the best of both worlds.







# Feel fully connected...

Varapuzha, Kochi - A great place to start exploring the urban life. A city on the move, this is where cultures meet. Mall lives boom. Lifestyle goes sky high. And art takes a new form. City life begins here.



# Where luxury comes naturally...

We know how much a home means to you. Every detail that has gone into the Gardens of Delight has been thoughtfully selected keeping in mind the highest standards of quality. The best of the best has gone into the making of these homes. This is our promise to you.





Gardens of  
Delight

Varapuzha, Edappally







Villas	Plot Size (cents)
1	6.4
2	6.3
3	6.4
4	6.7
5	7.1
6	7.2
7	7.3
8	7.2
9	7.2
10	7.8
11	7.8
12	7.7
14	7.9





## Reasons aplenty to stay happy.

- Grand patio adjacent to dining room
- Garden view for every villa
- Clubhouse with swimming pool and GYM
- Barbecue Point
- Children's Play-Indoor and Out door
- Community Room
- Mini Library
- Common Restroom for Maids/Drivers
- Round the clock security with camera surveillance
- 9 Meter high courtyard to reduce heat inside the house
- Customizable floor plans





Ground Floor area : 1230 Sqft



First Floor area : 1140 Sqft





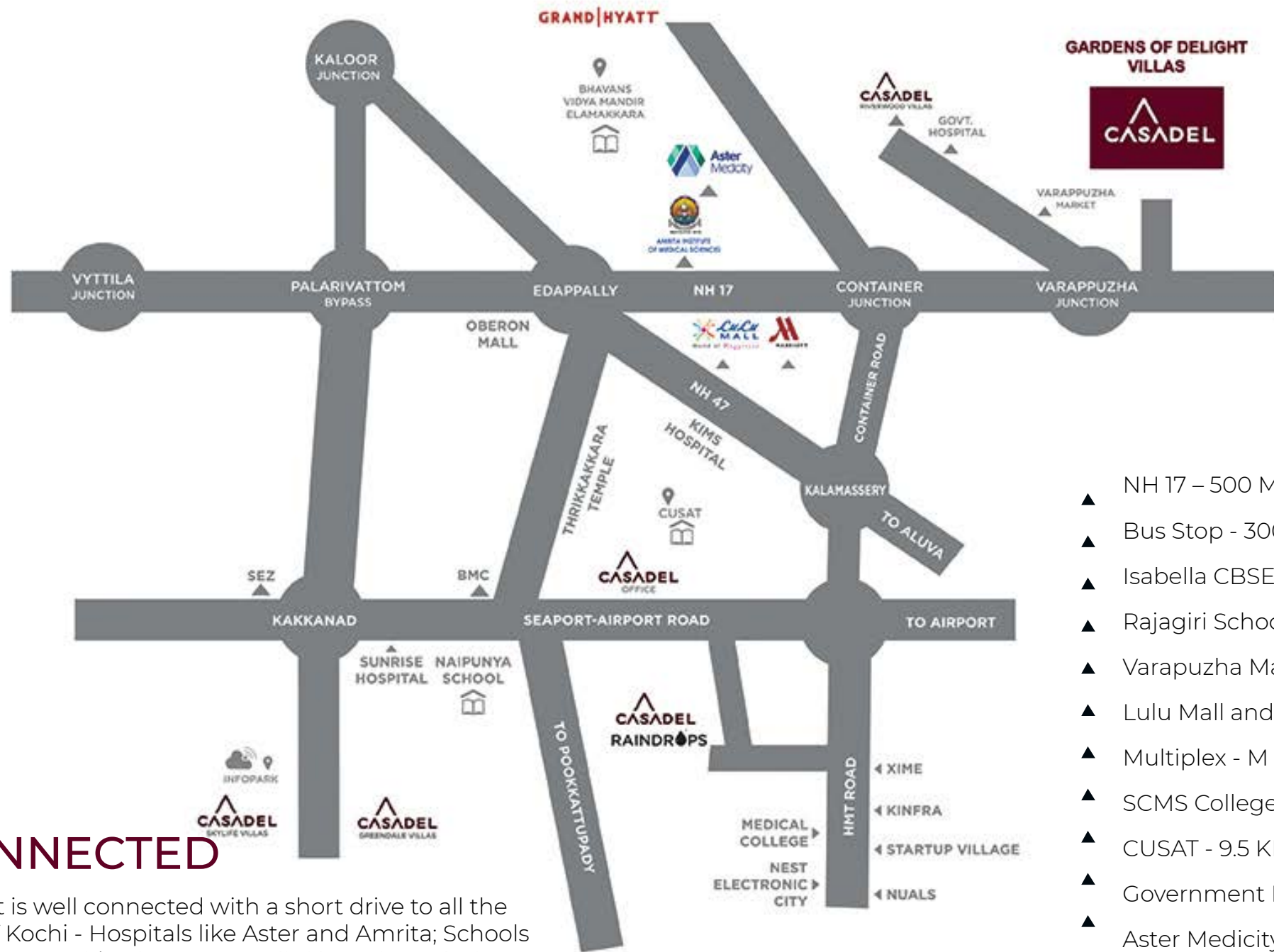
Attic space designed for home theater, Indoor game, open dinning, vegetable garden and open terrace

TYPE A	5 BHK 3750 Sqft
TYPE B	5 BHK 3500 Sqft
TYPE C	5 BHK 3250 Sqft
TYPE D	4 BHK 3000 Sqft
TYPE E	4 BHK 2750 Sqft
TYPE F	4 BHK 2500 Sqft

Attic area : 630 Sqft

Villa Types





## STAY CONNECTED

Gardens of Delight is well connected with a short drive to all the important parts of Kochi - Hospitals like Aster and Amrita; Schools Like Rajagiri and St. Joseph's; Shopping malls like Lulu and Oberon; Multiplexes like PVR and M Cinemas; Star hotels like Marriott and Hyatt; and other important places like High Court, Marine Drive, Kalamassery etc.

- ▲ NH 17 – 500 Meters
- ▲ Bus Stop - 300 Meters
- ▲ Isabella CBSE School - 200 Meters
- ▲ Rajagiri School - 8 KM
- ▲ Varapuzha Market - 1.5 KM
- ▲ Lulu Mall and Marriott - 9 KM
- ▲ Multiplex - M CINEMAS - 1.5 KM
- ▲ SCMS College - 9 KM
- ▲ CUSAT - 9.5 KM
- ▲ Government Hospital - 1.5 KM
- ▲ Aster Medicity - 7 KM
- ▲ Amrita Hospital - 7 KM
- ▲ Airport - 19 KM



## Structure

**Foundation :** Combination of random rubble stone foundation RCC column footing and grade beam

**Super Structure :** Combination of load bearing semi wire cut brick (red brick) or high quality solid blocks with columns.

**Roofs and Slabs :** Reinforced Cement concrete slabs

**Wall :** Cement Plastered

**Cement :** UltraTech /JSW or equivalent

**Steel :** TATA/ Jindal Steel or equivalent

## Structure

**Foundation :** Combination of random rubble stone foundation RCC column footing and grade beam

**Super Structure :** Combination of load bearing semi wire cut brick (red brick) or high quality solid blocks with columns.

**Roofs and Slabs :** Reinforced Cement concrete slabs

**Wall :** Cement Plastered

**Cement :** UltraTech /JSW or equivalent

**Steel :** TATA/ Jindal Steel or equivalent

## Structure

**Foundation :** Combination of random rubble stone foundation RCC column footing and grade beam

**Super Structure :** Combination of load bearing semi wire cut brick (red brick) or high quality solid blocks with columns.

**Roofs and Slabs :** Reinforced Cement concrete slabs

**Wall :** Cement Plastered

**Cement :** UltraTech /JSW or equivalent

**Steel :** TATA/ Jindal Steel or equivalent

## Structure

**Foundation :** Combination of random rubble stone foundation RCC column footing and grade beam

**Super Structure :** Combination of load bearing semi wire cut brick (red brick) or high quality solid blocks with columns.

**Roofs and Slabs :** Reinforced Cement concrete slabs

**Wall :** Cement Plastered

**Cement :** UltraTech /JSW or equivalent

**Steel :** TATA/ Jindal Steel or equivalent

## Structure

**Foundation :** Combination of random rubble stone foundation RCC column footing and grade beam

**Super Structure :** Combination of load bearing semi wire cut brick (red brick) or high quality solid blocks with columns.

**Roofs and Slabs :** Reinforced Cement concrete slabs

**Wall :** Cement Plastered

**Cement :** UltraTech /JSW or equivalent

**Steel :** TATA/ Jindal Steel or equivalent

## Structure

**Foundation :** Combination of random rubble stone foundation RCC column footing and grade beam

**Super Structure :** Combination of load bearing semi wire cut brick (red brick) or high quality solid blocks with columns.

**Roofs and Slabs :** Reinforced Cement concrete slabs

**Wall :** Cement Plastered

**Cement :** UltraTech /JSW or equivalent

**Steel :** TATA/ Jindal Steel or equivalent

## Structure

**Foundation :** Combination of random rubble stone foundation RCC column footing and grade beam

**Super Structure :** Combination of load bearing semi wire cut brick (red brick) or high quality solid blocks with columns.

**Roofs and Slabs :** Reinforced Cement concrete slabs

**Wall :** Cement Plastered

**Cement :** UltraTech /JSW or equivalent

**Steel :** TATA/ Jindal Steel or equivalent



# Finishes

**Internal Walls :** Putty and Plastic emulsion for internal wall and ceiling

**External Walls :** Exterior wall putty and weather shield paint finish for exterior

**Wood and Grills :** Enamel paint used for wood and grill

**Paint :** Berger / Asian Paint or equivalent

# Finishes

**Internal Walls :** Putty and Plastic emulsion for internal wall and ceiling

**External Walls :** Exterior wall putty and weather shield paint finish for exterior

**Wood and Grills :** Enamel paint used for wood and grill

**Paint :** Berger / Asian Paint or equivalent

# Finishes

**Internal Walls :** Putty and Plastic emulsion for internal wall and ceiling

**External Walls :** Exterior wall putty and weather shield paint finish for exterior

**Wood and Grills :** Enamel paint used for wood and grill

**Paint :** Berger / Asian Paint or equivalent

# Finishes

**Internal Walls :** Putty and Plastic emulsion for internal wall and ceiling

**External Walls :** Exterior wall putty and weather shield paint finish for exterior

**Wood and Grills :** Enamel paint used for wood and grill

**Paint :** Berger / Asian Paint or equivalent

# Finishes

**Internal Walls :** Putty and Plastic emulsion for internal wall and ceiling

**External Walls :** Exterior wall putty and weather shield paint finish for exterior

**Wood and Grills :** Enamel paint used for wood and grill

**Paint :** Berger / Asian Paint or equivalent



# Doors and Windows

**External Interfacing Doors :** Hardwood frames and shutters

**Internal Doors :** Hardwood frames and moulded shutter for internal doors

**Bathroom Doors :** High quality fiber doors

**Windows :** UPVC windows of approved make

# Doors and Windows

**External Interfacing Doors :** Hardwood frames and shutters

**Internal Doors :** Hardwood frames and moulded shutter for internal doors

**Bathroom Doors :** High quality fiber doors

**Windows :** UPVC windows of approved make

# Doors and Windows

**External Interfacing Doors :** Hardwood frames and shutters

**Internal Doors :** Hardwood frames and moulded shutter for internal doors

**Bathroom Doors :** High quality fiber doors

**Windows :** UPVC windows of approved make

# Doors and Windows

**External Interfacing Doors :** Hardwood frames and shutters

**Internal Doors :** Hardwood frames and moulded shutter for internal doors

**Bathroom Doors :** High quality fiber doors

**Windows :** UPVC windows of approved make

# Doors and Windows

**External Interfacing Doors :** Hardwood frames and shutters

**Internal Doors :** Hardwood frames and moulded shutter for internal doors

**Bathroom Doors :** High quality fiber doors

**Windows :** UPVC windows of approved make



# Flooring

**Sitout :** A combination of high quality tiles of bigger size or granite

**Living, Dining and Bedrooms :**  
80 x 80 vitrified tiles

**Attic :** Wooden finished anti skid ceramic tiles

# Flooring

**Sitout :** A combination of high quality tiles of bigger size or granite

**Living, Dining and Bedrooms :**  
80 x 80 vitrified tiles

**Attic :** Wooden finished anti skid ceramic tiles

# Flooring

**Sitout :** A combination of high quality tiles of bigger size or granite

**Living, Dining and Bedrooms :**  
80 x 80 vitrified tiles

**Attic :** Wooden finished anti skid ceramic tiles

# Flooring

**Sitout :** A combination of high quality tiles of bigger size or granite

**Living, Dining and Bedrooms :**  
80 x 80 vitrified tiles

**Attic :** Wooden finished anti skid ceramic tiles

## **Kitchen**

Counter with polished granite platforms  
with stainless steel sink and drain board  
with single lever sink mixer.  
2 feet tile dado above counter

## **Bathroom**

Wall tile upto height of 210cm

**Sanitary Fixtures :** Concealed piping and  
premium quality fittings

**Sanitary Make and Fittings :** Kerovit/  
Jaquar or equivalent

## **Kitchen**

Counter with polished granite platforms  
with stainless steel sink and drain board  
with single lever sink mixer.  
2 feet tile dado above counter

## **Bathroom**

Wall tile upto height of 210cm

**Sanitary Fixtures :** Concealed piping and  
premium quality fittings

**Sanitary Make and Fittings :** Kerovit/  
Jaquar or equivalent

## **Kitchen**

Counter with polished granite platforms with stainless steel sink and drain board with single lever sink mixer.  
2 feet tile dado above counter

## **Bathroom**

Wall tile upto height of 210cm

**Sanitary Fixtures :** Concealed piping and premium quality fittings

**Sanitary Make and Fittings :** Kerovit/ Jaquar or equivalent

## **Kitchen**

Counter with polished granite platforms with stainless steel sink and drain board with single lever sink mixer.  
2 feet tile dado above counter

## **Bathroom**

Wall tile upto height of 210cm

**Sanitary Fixtures :** Concealed piping and premium quality fittings

**Sanitary Make and Fittings :** Kerovit/ Jaquar or equivalent

## **Kitchen**

Counter with polished granite platforms  
with stainless steel sink and drain board  
with single lever sink mixer.  
2 feet tile dado above counter

## **Bathroom**

Wall tile upto height of 210cm

**Sanitary Fixtures :** Concealed piping and  
premium quality fittings

**Sanitary Make and Fittings :** Kerovit/  
Jaquar or equivalent

## **Kitchen**

Counter with polished granite platforms with stainless steel sink and drain board with single lever sink mixer.  
2 feet tile dado above counter

## **Bathroom**

Wall tile upto height of 210cm

**Sanitary Fixtures :** Concealed piping and premium quality fittings

**Sanitary Make and Fittings :** Kerovit/ Jaquar or equivalent



# Electrification and cabling

Three phase power supply with concealed copper wiring in ISI marked PVC conduits.  
Adequate light, fans and power points with Modular switches ( legrand or equivalent) controlled by DB s, ELCB s and MCB s

**Wires :** Finloex / Wipro / VGuard or equivalent

**Switches :** Legrand or equivalent

**Piping :** Supreme or Finloex or equivalent

# Electrification and cabling

Three phase power supply with concealed copper wiring in ISI marked PVC conduits.  
Adequate light, fans and power points with Modular switches ( legrand or equivalent) controlled by DB s, ELCB s and MCB s

**Wires :** Finloex / Wipro / VGuard or equivalent

**Switches :** Legrand or equivalent

**Piping :** Supreme or Finloex or equivalent

# Electrification and cabling

Three phase power supply with concealed copper wiring in ISI marked PVC conduits.  
Adequate light, fans and power points with Modular switches ( legrand or equivalent) controlled by DB s, ELCB s and MCB s

**Wires :** Finloex / Wipro / VGuard or equivalent

**Switches :** Legrand or equivalent

**Piping :** Supreme or Finloex or equivalent

# Electrification and cabling

Three phase power supply with concealed copper wiring in ISI marked PVC conduits.  
Adequate light, fans and power points with Modular switches ( legrand or equivalent) controlled by DB s, ELCB s and MCB s

**Wires :** Finloex / Wipro / VGuard or equivalent

**Switches :** Legrand or equivalent

**Piping :** Supreme or Finloex or equivalent

# Electrification and cabling

Three phase power supply with concealed copper wiring in ISI marked PVC conduits.  
Adequate light, fans and power points with Modular switches ( legrand or equivalent) controlled by DB s, ELCB s and MCB s

**Wires :** Finloex / Wipro / VGuard or equivalent

**Switches :** Legrand or equivalent

**Piping :** Supreme or Finloex or equivalent







# Think Interiors Think Casadel..

Home is where the heart is, an age old saying and so true indeed. We are in the beautiful business of creating this home for you.

We provide a complete range of high-end interior services and turnkey solutions for your commercial and residential projects.

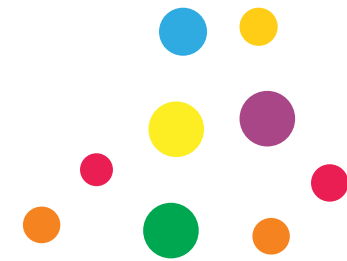




## A Few Of Our Designs





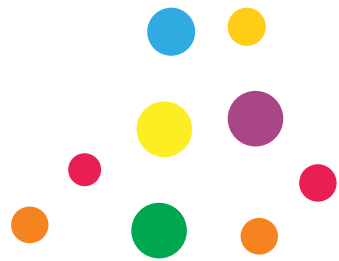


## SKYSCAPE KAKKANAD

### AN EPITOME OF CONTEMPORARY LIVING

Set amidst an illustrious villa project that spans over 2 acres comprising 15 villas and an extensive play area, Skyscape is all set to become the newest and most exciting lifestyle hub in the region. By offering apartments ranging from a compact size of 830 Sqft to a spacious 1285 Sqft, Skyscape lets you put your preferences first when choosing your apartment.





GREENDALE  
KAKKANAD

## AESTHETIC BLEND OF CONTEMPORARY AND TRADITIONAL ARCHITECTURE

18 elegant luxury villas with stunning views set amidst lush greenery with 7 meter wide tarred road. Villas ranging from 1800 Sqft to 3500 Sqft with landscaped green areas all around the compound wall.





An aerial 3D architectural rendering of a villa development named Riverwood. The development consists of 34 numbered villas arranged in a grid-like pattern. The villas are two-story houses with dark brown roofs and light-colored walls. They are surrounded by lush green lawns, palm trees, and other tropical vegetation. A winding river or canal runs through the center of the development, separating the villas into different sections. The overall scene is bright and sunny, with shadows cast by the trees and buildings. In the background, more trees and a glimpse of a road can be seen.

# RIVERWOOD

Riverwood. The 2.5 acre land at Varapuzha accommodates 25 villas amidst lush greenery. The soft burble of the Varapuzha river runs melodiously in the background making every nature lover fall for this place instantly.



**RIVERWOOD**  
Varapuzha, Edappally





# Where nature lives next door...

With absolute quality control in every stage of construction, Raindrops guarantees luxury with a natural touch. 16 Villas set amidst 600 plants, inclusive of 100 fruit trees, it provides each resident with not just an exceptional home, but also initiates a close relationship with the natural environment. Bamboo walls and a green planter area around the property are just some of the ways in which we celebrate nature's endless bounty.






**RAINDROPS**

1 km off Seaport Road  
Kakkanad







An aerial photograph of a villa development. There are 17 houses, each with a white circular number on its roof. The houses are arranged in a cluster, surrounded by lush greenery, palm trees, and a paved road. The houses have white walls and dark brown roofs. The surrounding area is a mix of green grass and dense trees. In the bottom left corner, there is a table with two columns: 'Villa#' and 'Plot Size (Cents)'. The table lists the villa numbers and their corresponding plot sizes in cents.

Villa#	Plot Size (Cents)
1	6.2
2	7.6
3	4.5
4	4.6
5	5.0
6	7.5
7	8.5
8	6.6
9	6.6
10	6.6
11	7.0
12	6.8
14	6.8
15	6.8
16	5.5
17	5.4



**Skylife**

Infopark, Phase 2  
Kakkanad





## Actual Photos





Actual Photos







**Skyscape** INFOPARK Kakkanad



**Greendale** Kakkanad



**Riverwood** Varapuzha, Edappally



**Raindrops** Seaport Airport Road, Kakkanad



**Skylife** INFOPARK Kakkanad



**Gardens of Delight** Varapuzha, Edappally



[sales@casadel.com](mailto:sales@casadel.com)



+91 8089 003 003

+91 8089 004 004

Australia: +61 451 018 373

USA: +1 732 397 4451

Germany: +49 151456 78792

[www.casadel.com](http://www.casadel.com)

[www.facebook.com/casadeldevelopers](https://www.facebook.com/casadeldevelopers)

Casadelo Developers Pvt. Ltd.,  
6/838 B-2, Seaport Airport Road,  
Vallathol Junction, Thrikkakara P.O.,  
Kochi 682021